

12-panel CLIA cup with built-in timer



The DrugCheck® Waive™ RT is the only CLIA-waived device that detects MET and MDMA at 500 ng/ml. This improved sensitivity allows for better detection of MET, MDMA, and other like substances. With the addition of AMP and MDA (3,4-methylenedioxyamphetamine) at 1000 ng/ml, DrugCheck Waive RT delivers a longer window of detection than standard CLIA-waived cups and is reimbursable for 12 drugs.

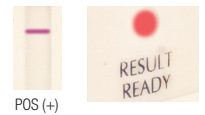
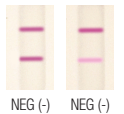
The DrugCheck Waive RT also contains the only CLIA-waived benzodiazepine 200 and barbiturate 200 cutoffs, making it much more sensitive for BZO and BARs than standard CLIA cups.

12 AVAILABLE DRUGS (ng/mL)					
MET MET	Methamphetamine	500	BAR BAR	Barbiturates	200
MET MET	MDMA	500	BZO BZO	Benzodiazepine	200
AMP AMP	Amphetamine	1000	OPI OPI	Opiates	300
AMP AMP	MDA	1000	PCP PCP	PCP	25
THC THC	Marijuana	50	MTD MTD	Methadone	300
COC COC	Cocaine	300	OXY OXY	Oxycodone	100

91001-3

DRUGCHECK WAIVE RT TEST PROCEDURE

1. Add specimen to "Fill to here" line on the side of the cup and tighten the lid securely.
2. Remove privacy label.
3. Read adulterant pads (SG, pH, CR) at times indicated on Adulterant Color Chart provided with the device – most within one minute.
4. Read negative results as soon as two lines appear on any test strip – typically within about two minutes.
5. Read presumptive positive results when the "Result Ready" window turns red – approximately 10 minutes.
6. After 15 minutes, or when the "Result Expired" window turns red, results are no longer valid and should not be read.



DRUGCHECK® Waive™ RT Adulterant Color Chart				
PAD ORDER IN THE CUP				
Adulterant (specimen validity) pads must be read at the Test Read Time as pad color may change.				
Test Read Time	Pad Pre-Test Color	Abnormal (low)	Normal	Abnormal (high)
Specific Gravity (SG) 45 seconds	Light Green	Blue	Green (1.000, 1.005, 1.015, 1.020)	Yellow (≥1.030)
pH (pH) Immediate	Light Green	Orange (2, 3)	Yellow (4, 5, 7, 9)	Blue (≤10)
Creatinine (CR) 45 seconds	Light Green	Orange (Negative, 10)	Brown (20, 50, 100, 200 mg/dL)	Blue

DC212B 0711



FEATURES

- Easy to read
- Test for up to 12 drugs plus adulterants
- Double-wall cup construction
- Built-in lid liner to prevent leakage
- Made in U.S.A.
- No tipping, moving parts, or plungers
- Controls available (forensic use only)

NEW Expanded SAMHSA and CLIA Lab Services

- Unbeatable prices on all lab services
- GC/MS confirmations
- Urine and Oral Fluid Testing

EXPRESS DIAGNOSTICS
INTL. INC.

Toll Free **888-466-8433**

sales@drugcheck.com