

Alcohol Breath Tester Operational Manual



FOR FORENSIC USE ONLY

Model: SC100

Express Diagnostics Int'l, Inc.
www.drugcheck.com | www.express-check.com

TABLE OF CONTENTS

Introduction	01
Correct Measurement	01
Power Supply	01
Description of Parts	02
Operation	03
Accessories	05
Important Notes	06
Replace sensor module	06
Troubleshooting	08
Specifications	09
Precautions	10


Introduction

- The device is intended to measure alcohol in the human breath. Measurements obtained by this device are used in the diagnosis of alcohol intoxication.
- NOTE: FOR FORENSIC USE ONLY**

Correct Measurement

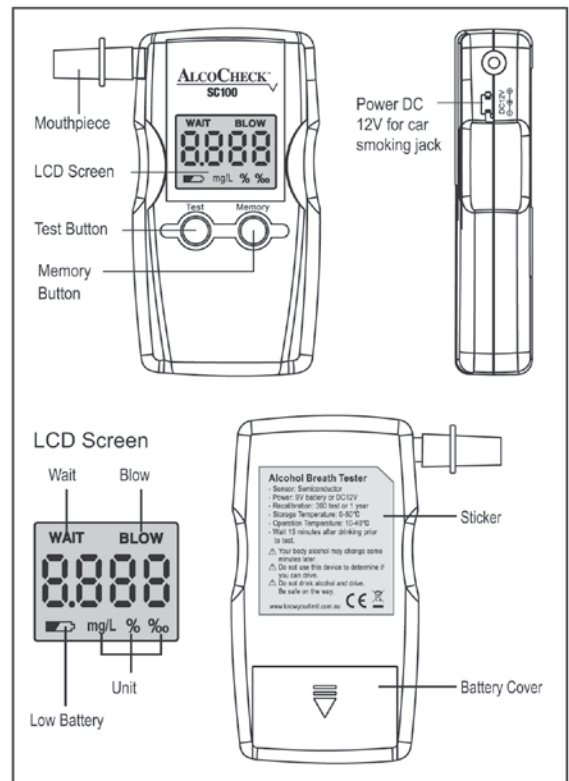
- Before testing, wait at least 15 minutes after your last drink.
- The device must be stored at +10 ~ +40°C or 50 ~ +104°F.

Power Supply

- Slide back the battery cover on the back of the device.
- Insert 9V alkaline battery, making sure that the +/- symbols are correctly aligned.
- If the battery voltage is too low, the unit may display a battery symbol "  " and the device may not operate correctly.
- The device can be also operated from DC 12 V, through the car "lighter", but it cannot be charged this way



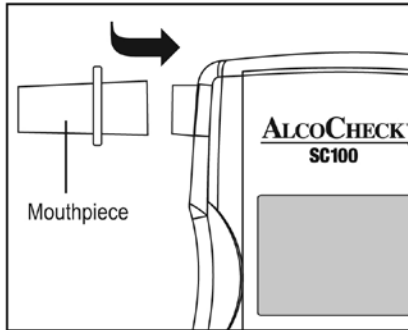
Description of Parts



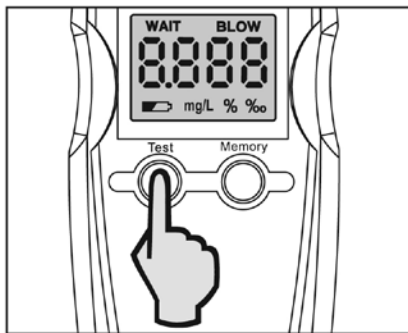
Operation

Test Mode

- Insert one of the mouthpieces into the 'blow in' hole.



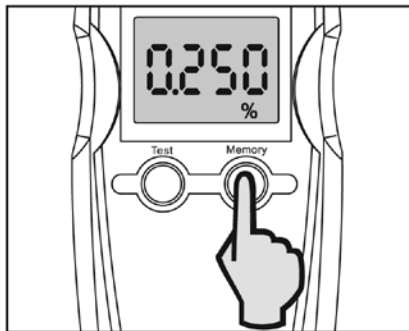
- Press and hold the TEST button until power comes on.



- 03 -

Memory mode

- The device displays the test result for about 20 seconds; press the "Memory" button to check the previous result.



- The device turns off automatically.
- The memory button can only be used in this mode .

Accessories

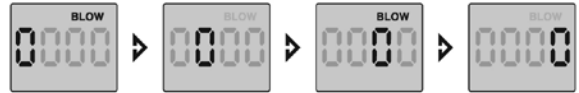
- Mouthpieces

- 05 -

- The "WAIT" signal appears and the countdown begins.



- Blow into the mouthpiece (for a few seconds) when the "BLOW" and flashing "0" signal appears.



- Your test result will be displayed on the screen for 20 seconds.



- 04 -

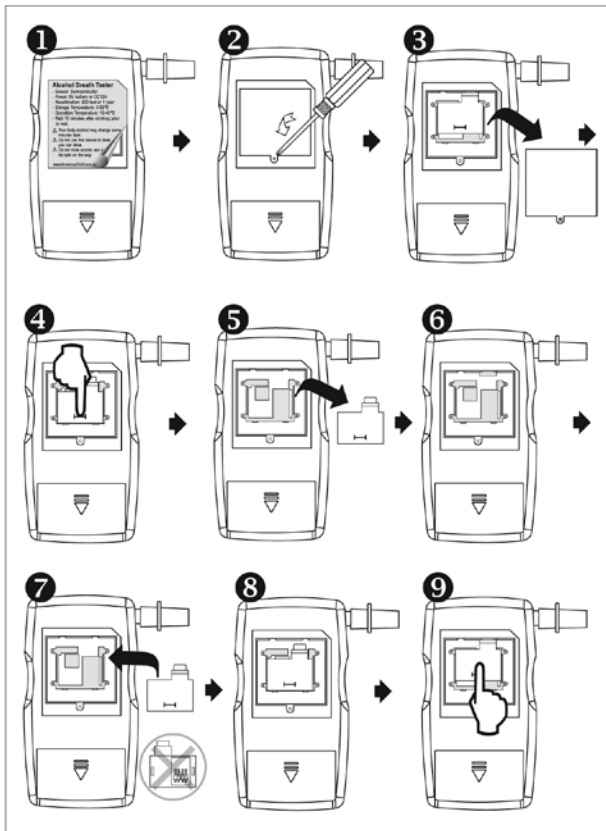
Important Notes

- Before testing, wait at least 15 minutes after your last drink.
- After countdown, blow immediately and blow until beeping sound stops.
- The memory recalls function only available after tested and 20 seconds.
- Only use the device in a temperature +10 ~ +40°C or +50 ~ +104°F.
- Using 9V alkaline battery only.
- Wait 30 seconds for retest.
- The car smoking plug will terminate the power of battery.
- Replace Sensor Module: each 6-12 month or 500 tested times.
- The device will alarm if achieve 500 tested times for replacing sensor module.
- Never store the device in a corrosive gas room.
- Never store the device under sun exposure area.
- Avoid dropping or subjecting the device to a strong shock.

Replace sensor module




- Tester counter indicates the times of tested, and display the digits after power on.
- The sensor may change the performance some month later.
- Change the sensor module for each 12 months or 500 tested times.
- The device will alarm when achieved 500 test times.
- Only purchase and replace the sensor module by yourself.
- Replace procedure as below:

- 06 -



- 07 -

Troubleshooting

Error Message	Action	Remarks
No Display	<ul style="list-style-type: none"> - Press and hold the TEST button until power comes on. - Check the battery - Check the DC jack (lighter) which will terminate the power of the battery when plug in. 	
Auto Off	- Low battery or test over	
	- Low battery indication change to a new alkaline battery	
Alarm Sound	<ul style="list-style-type: none"> - Shows "Hi" if the measurement is above the display range - Number of tests reached 500, need to replace the sensor module 	
Hi	<ul style="list-style-type: none"> - The blood alcohol content above the display range. - Display range: 0.400mg/L BrAC (0.080%BAC, 0.800%BAC) 	

- 08 -

Specifications

- Semiconductor Sensor
- Sensor module is easy to replace and can last up to 500 test.
- Test counter will beep when the number of tests reaches 500.
- Display range: 0.000-0.400mg/L BrAC (0.080%BAC, 0.800%BAC)
- Shows "Hi" if the measurement is above the display range.
- Accuracy: +/-0.05mg/L at 0.25mg/L(+/-0.01% at 0.05%; +/-0.10% at 0.50%)
- Memory can recall the last 20 test results.
- 5 mouthpieces included.
- Warm up time: 10 ~ 20 seconds.
- Testing Time: 10 seconds.
- Circling testing: less than 60 seconds.
- Audible sound alarm if above 0.25mg/L BrAC (0.05%BAC or 0.50%BAC)
- Indication: 4 digits LCD with status and backlight.
- Power supply: 9V alkaline battery (not included) or 12V DC input.
- DC jack will terminate the power of battery when plugging.
- Battery available for standard testing is about 200 times.
- Low battery indication and auto power off function.
- Operation: 10°C ~ +40°C; Store: 0°C ~ +50°C
- Size: 125 x 65 x 25mm

- 09 -

Precautions

- Your blood alcohol content (BAC) may change some minutes later.
- Do not use this device to determine if you can drive.
- You cannot use the test results of device in court of law or against police.
- For your safety and responsibly, don't drink and drive.

- ⚠ Your blood alcohol may change some minutes later.
- ⚠ Do not use this device to determine if you can drive.
- ⚠ Do not drink alcohol and drive. Be safe on the way.

Express Diagnostics Int'l, Inc.
 507-526-3951 | 888-466-8433
 Email: info@drugcheck.com
 www.drugcheck.com | www.express-check.com



- 10 -